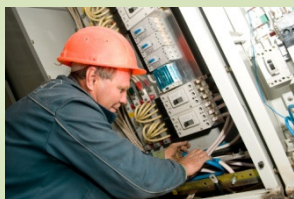


Electrical contractors and ServiceLink



The system maintains a **complete history** of site visits and quotes which can be easily accessed, to provide a easy way for staff to see what happened previously at any site. All job data is retained after a job is complete , who attended , materials used, PO's raised etc.

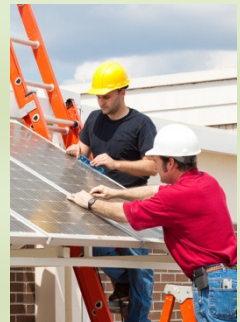
Invoicing can be either time and materials , fixed price or SOR based. The system can raise invoices one per job, or on larger works applications for payment / interim invoices as the job progresses



Job costing uses the labour and materials information input for invoicing to provide costs and margin for each job, which is visible to users before a job is invoiced.

A complete service history of each asset can be stored.

Details of each asset can be stored – any number of assets per site.



There is an interface to the mobile comms that

1. Send jobs to mobiles
2. collects data about work done
3. Print inspection reports and work reports as PDF's and attaches them to job records



ServiceLink will generate planned maintenance jobs automatically. Load in the data at the start of the contract and ServiceLink will generate the visits. Invoicing can be either job based, or for PPM contracts done on a repeating basis e.g. monthly , quarterly etc.